



CCTV

Fixed Dome Cameras:
for discreet around-
the-clock surveillance





The right model for every situation: fixed dome cameras by Siemens

This attractive range of aesthetically appealing dome cameras includes 10 different models for monitoring indoor and outdoor areas. The diverse monofocal, varifocal and vandal-resistant models are intended for use wherever discreet, unobtrusive surveillance is needed, such as in retail stores, restaurants, foyers of hotels, warehouses, petrol stations and other commercial premises.



True 24 hour monitoring with excellent image quality

■ Day-night models with mechanical IR cut filter for true 24 hour monitoring

All day-night models boast a mechanical infrared cut filter to ensure true colour reproduction. They not only provide the highest quality colour images by day, as when using infrared lighting, they also produce great monochrome pictures at night.

■ Vandal-resistant, with an IP66 protection rating for outdoor use

The vandal-resistant models are enclosed in a die-cast, heavy-duty aluminium housing, with a high-impact polycarbonate bubble that can withstand an accidental or deliberate blow-up to 1000 kg. These models have an IP66 protection rating for outdoor use in all weather conditions.

■ Significantly clearer images even in poor light conditions with aspherical F1.0 lenses

All varifocal models are equipped with an auto-iris lens. However, both the colour and monochrome vandal-resistant models include an aspherical F1.0 lens, which receives twice as much light as standard F1.4 aperture lenses, resulting in much clearer images in low light situations. These lenses also have a 91° viewing angle, so the domes can be mounted in the corner of a room and see everything.

■ All models "IP enabled" by combination with an IP base

Access to the cameras is possible from any PC with an Ethernet connection and a standard web browser simply combining the dome cameras with an IP base – makes an attractive unit capable of integration with the full spectrum of IP solutions on an Ethernet network.

■ Versatile configuration via remote setup kit

All day-night and colour models can be remotely programmed using the remote setup kit.

■ Service monitor cable for in-situ setup

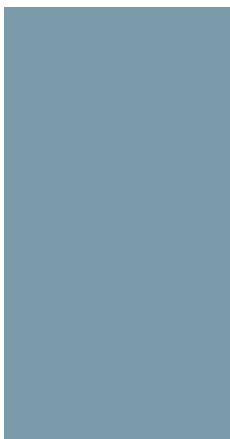
The configuration, alignment and setting of the camera view can be done directly on location using a test monitor. This facilitates operational setup of the camera, requires less effort and is therefore quicker and easier to install.

■ Full 360° setup for pan, tilt and rotation

All models can be adjusted perfectly in each installation, whether ceiling or wall mounted, with 360° pan, tilt and rotation.

Highlights

- Day-night models with mechanical IR cut filter for true 24 hour monitoring
- Vandal-resistant models, with an IP66 protection rating for outdoor use
- Clearer images even in poor light conditions with aspherical F1.0 lenses
- All models IP enabled in combination with an IP base
- Versatile configuration via remote setup kit
- Service monitor connector for in-situ setup
- Full 360° setup for pan, tilt and rotation



The right functionality for every situation

■ Monofocal, fixed dome cameras

The Siemens' fixed dome range includes four stylish internal monofocal models all 1/3" CCD with a 3.7 mm lens. Variables include a choice of standard or high resolution monochrome or colour imaging.

They are all attractive, ceiling-mounted cameras with clear bubbles and include a service monitor connector and cable for connection to a portable monitor, ensuring a quick setup and easy installation. Both colour models have an RS232 port to connect to a PC, to allow easy remote setup via the optional remote setup kit.

Accessories include tinted bubbles, replacement clear bubbles, remote setup software, plus 2.9 mm, 6 mm and 12 mm lenses interchangeable with the original 3.7 mm lens supplied as standard.

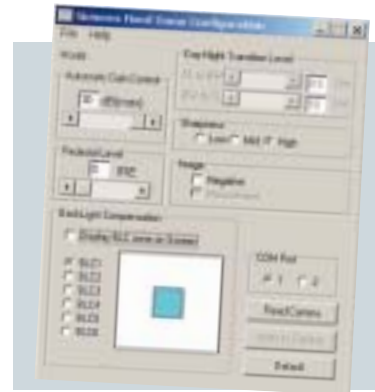
■ Varifocal, fixed dome cameras

In addition to the monofocal domes, the internal range also includes three simple, stylish varifocal models all 1/4" CCD with

a 2.8–5.8 mm, auto-iris lens. Variables include a choice of high resolution monochrome or colour imaging as well as day-night, IR-sensitive operation (the CFVS1415 has a mechanical infrared cut filter which ensures perfect colour reproduction performance during the day and when used with an infrared illuminator, as lighting levels fall – will switch automatically to monochrome at night to give crisp, sharp images 24 hours a day).

They are all attractive cameras with tinted bubbles which can be ceiling-mounted or wall-mounted for 360° setup (pan, tilt and rotation) and include service monitor connection and cable for local, easy installation.

Both the colour and day-night models can be connected to a PC via a remote adapter, for remotely setting up various parameters and downloading/uploading these. Accessories include clear bubbles, replacement tinted bubbles and remote setup software.



Remote setup for all day-night and colour models

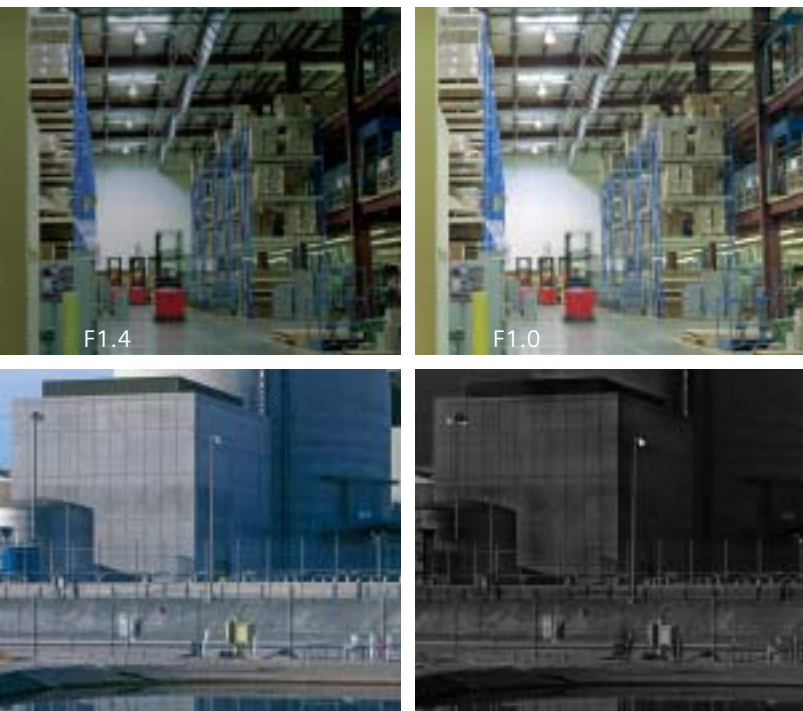
■ Vandal-resistant, varifocal, fixed dome cameras IP66

To complete the range, allowing both internal and external installations, are three vandal-resistant varifocal models all with an auto-iris lens and rated IP66 in 1000 kg high impact, polycarbonate bubble and heavy-duty, die-cast, aluminium enclosure.

The robust construction of this camera is specifically designed to work faultlessly even in vandalism encountered areas.

Variables include a choice of monochrome or colour imaging as well as day-night, IR-sensitive operation (the CFVS1415 has a mechanical infrared cut filter which ensures perfect colour reproduction performance during the day and when used with an infrared illuminator, as lighting levels fall – will switch automatically to

F1.0 offers twice the amount of light available than F1.4, available on both colour and mono vandal-resistant models



1000 kg impact resistant and IP66 protection rating



Day-night model automatically changes from colour pictures by day, to monochrome pictures at night – true 24 hour surveillance!



monochrome at night to give crisp, sharp images 24 hours a day).

They are all attractive high resolution cameras with tinted bubbles which can be ceiling-mounted or wall-mounted for 360° setup (pan, tilt and rotation) and include service monitor connection and cable for local, easy installation. Flexible

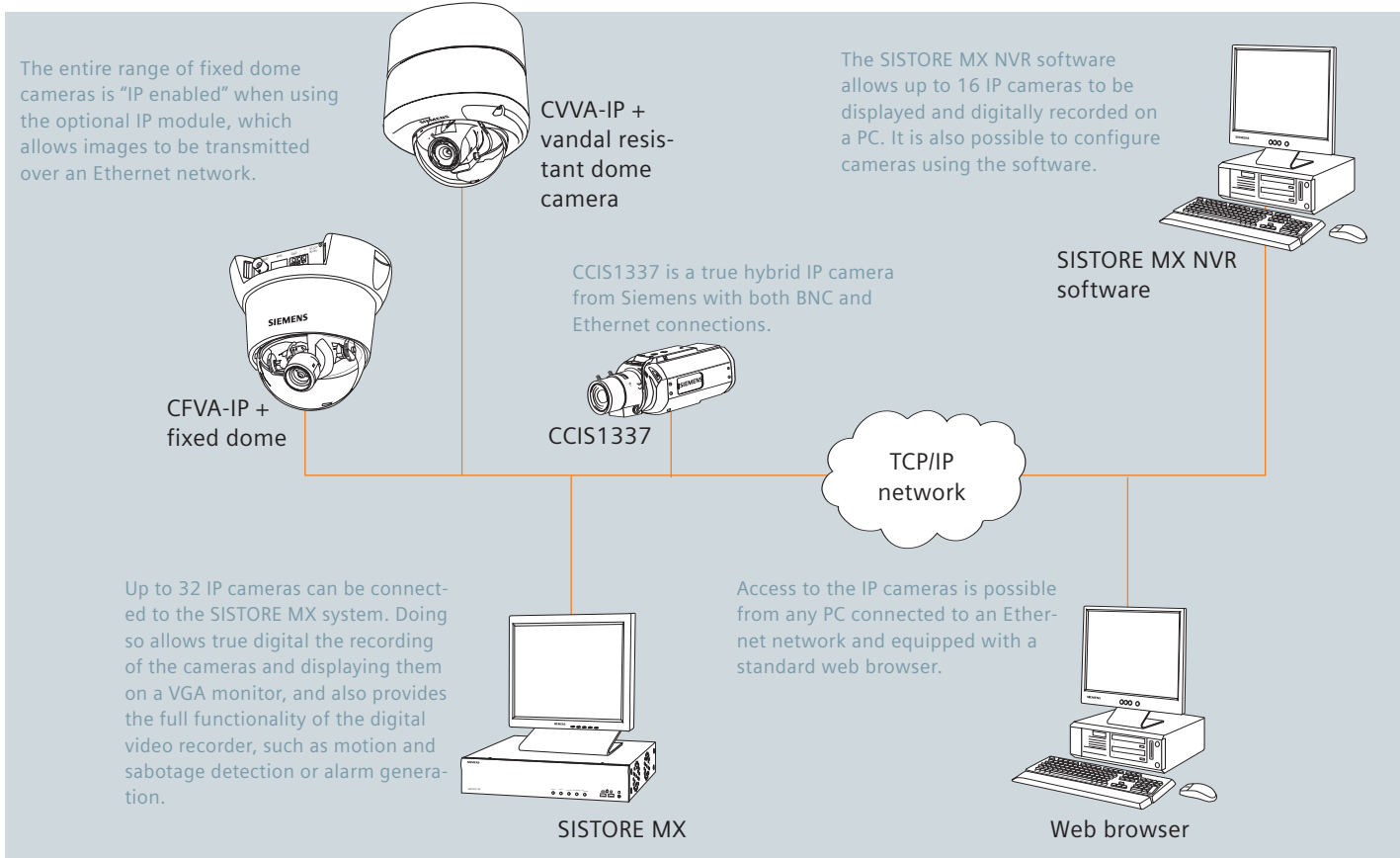
mounting options include flush ceiling mount or the use of a wall-mount bracket to keep the dome horizontal.

Also included as standard is an RS232 cable with remote setup software for use with the colour and day-night models. The software allows easy programming, then uploading of these settings to the

camera, or reading settings from the camera and saving them to the PC.

Accessories include clear bubbles and replacement tinted bubbles.

Monofocal, fixed dome cameras	Varifocal, fixed dome cameras	Vandal-resistant, varifocal, fixed dome cameras
<p>These monofocal, fixed dome cameras are best suited to smaller CCTV installations in locations such as:</p> <ul style="list-style-type: none"> ■ smaller shops, stores and offices ■ schools ■ hotels ■ restaurants ■ petrol stations 	<p>These varifocal, fixed dome cameras are best suited to larger, indoor CCTV installations in locations such as:</p> <ul style="list-style-type: none"> ■ larger shops, stores and offices ■ flexible viewing installations ■ shopping centres 	<p>These rugged, vandal-resistant, varifocal, fixed dome cameras are best suited to CCTV installations indoors or outside – wherever the possibility of wilful or malicious damage may occur – such as:</p> <ul style="list-style-type: none"> ■ railway, bus and coach stations ■ airports, docks and ferry terminals ■ leisure centres, sports grounds and concert venues ■ shopping centres and cinema car parks ■ banking halls and inside ATM kiosks ■ on the outside of offices, public buildings



All fixed dome models "IP enabled" by Hybrid Technology from Siemens

The complete range of fixed dome models are IP enabled due to Hybrid Technology from Siemens. This is truly the best of both worlds, as a standard analogue BNC connection is present for use in traditional CCTV systems. However, with Hybrid Technology, the cameras are future-proof, because as the system is transferred to digital (i.e. swapped from coaxial cable to Ethernet transmission), the cameras can be combined with an IP module with an Ethernet connector, to allow direct connection to the network.

Siemens IP cameras capture and send live streaming video directly over an IP network that enables users to view and manage the camera using a standard web browser or SISTORYRE NVR (network video recorder) software on any local or remote computer on a network. Therefore transmission distances are no longer a problem.

■ SISTORYRE MX NVR

SISTORYRE MX NVR software allows all the functionality of the highly successful SISTORYRE MX digital recording system to take place directly on a PC. This means it is possible to record IP cameras on a PC, via password access to restrict the viewing of the cameras and utilize the many multi-screen viewing formats possible (up to 32 IP cameras can be recorded and viewed simultaneously). Of course, if required, it is still possible to manage any alarms connected, or make use of the in-built motion detection and sabotage detection alarms.



■ Installation

An IP based Ethernet network infrastructure is often already in place, which means the IP camera can easily be connected to the nearest network connection. Simply set the IP address and you're up and running! Adding more IP cameras to the system is as easy as the first one.

Access to IP cameras via SISTORYRE MX NVR software.



Technical overview

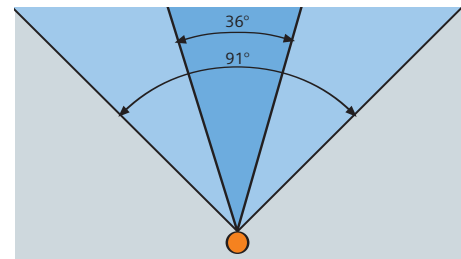
	Monofocal, fixed dome cameras			
	CFFC1315	CFFC1310	CFFB1315	CFFB1310
				
	Colour	Colour	Mono	Mono
CCD size	1/3"	1/3"	1/3"	1/3"
TV lines	480	330	580	400
Resolution	High	Standard	High	Standard
Lens type	Manual iris 3.7 mm	Manual iris 3.7 mm	Manual iris 3.7 mm	Manual iris 3.7 mm
Horizontal angle of view	70°	70°	70°	70°
Min. illumination (at 50 IRE)	0.56 Lux (F2.0)	0.31 Lux (F2.0)	0.2 Lux (F2.0)	0.13 Lux (F2.0)
Dual power 12 VDC/24 VAC	■	■	■	■
TV standard	PAL or NTSC	PAL or NTSC	CCIR or EIA	CCIR or EIA
S/N-ratio	> 50 dB	> 50 dB	> 50 dB	> 50 dB
Backlight compensation (BLC)	■	■	■	■
Colour/mono switchover				
Infrared cut filter				
Automatic gain control (AGC)	■	■	■	■
Electronic shutter	auto / 1/50~1/100000 s	auto / 1/50~1/100000 s	auto / 1/50~1/100000 s	auto / 1/50~1/100000 s
Phase locking synchronisation	■	■	■	■
Remote programming	■	■		
RS232 interface	■	■		
Local service monitor connector	■	■	■	■
Wall or ceiling mount	■	■	■	■
Vandal protection rating				

Options

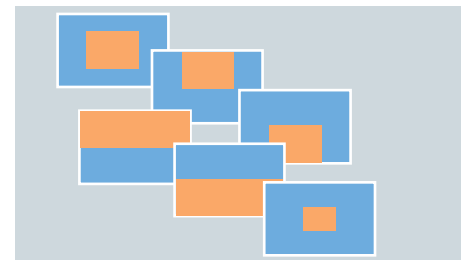
	CFFA-TD	CFFA-CD	CFFA-IC29	CFFA-IC37	CFFA-IC60	CFFA-IC12	CFFA-RS
							
	Tinted bubble	Clear bubble	2,9 mm lens	3,7 mm lens	6 mm lens	12 mm lens	Remote setup kit
CFFC1315	■	■	■	■	■	■	■
CFFC1310	■	■	■	■	■	■	■
CFFB1315	■	■	■	■	■	■	
CFFB1310	■	■	■	■	■	■	
CFVS1415	■	■					delivered with product
CFVC1415	■	■					■
CFVB1415	■	■					
CVVS1415							delivered with product
CVVC1315							delivered with product
CVVB1315							delivered with product

Varifocal, fixed dome cameras			Vandal-resistant, varifocal, fixed dome cameras		
CFVS1415	CFVC1415	CFVB1415	CVVS1415	CVVC1315	CVVB1315
					
Day-Night	Colour	Mono	Day-Night	Colour	Mono
1/4"	1/4"	1/4"	1/4"	1/3"	1/3"
480	480	580	480	480	580
High	High	High	High	High	High
Auto-iris 2.8 mm ~ 5.8 mm	Auto-iris 2.8 mm ~ 5.8 mm	Auto-iris 2.8 mm ~ 5.8 mm	Auto-iris 2.8 mm ~ 5.8 mm	Auto-iris 3 mm ~ 8 mm	Auto-iris 3 mm ~ 8 mm
35.9° ~ 74.7°	38.2° ~ 76.7°	38.2° ~ 76.7°	35.9° ~ 74.7°	36° ~ 91°	36° ~ 91°
0.34 Lux (F1.4)	0.6 Lux (F1.4)	0.2 Lux (F1.4)	0.34 Lux (F1.4)	0.47 Lux (F1.0)	0.05 Lux (F1.0)
■	■	■	■	■	■
PAL or NTSC	PAL or NTSC	CCIR or EIA	PAL or NTSC	PAL or NTSC	CCIR or EIA
> 50 dB	> 50 dB	> 50 dB	> 50 dB	> 50 dB	> 50 dB
■	■	■	■	■	■
■			■		■
mechanical			mechanical		
■	■	■	■	■	■
auto / 1/50~1/100000 s	auto / 1/50~1/100000 s	auto / 1/50~1/100000 s	auto / 1/50~1/100000 s	auto / 1/50~1/100000 s	auto / 1/50~1/100000 s
■	■	■	■	■	■
■	■	■	■	■	■
■	■	■	■	■	■
■	■	■	■	■	■
■	■	■	■	■	■
			IP66, 1000 kg	IP66, 1000 kg	IP66, 1000 kg

Greater viewing angle for colour and mono models



Software allows programming of six different modes of backlight compensation



CVVA-FMIP	CVVA-CD	CVVA-WMIP	CFVA-BA	CFVA-IP	CVVA-IP
					
Flush mount kit	Clear bubble (vandal)	Wall mount bracket	Indoor dome base	IP module (fixed dome cameras)	IP module (vandal resistant dome cameras)
■			■	■	
■			■	■	
■			■	■	
■			■	■	
■			■	■	
■	■	■			■
■	■	■			■
■	■	■			■

Vandal-resistant models mounting options

- Ceiling mount 
- Wall mount 
- Flush mount kit 
- Wall mount bracket 



Welcome to the world of innovative thinking

■ Innovation

Siemens invests a great deal in both manpower and research and development. This results in a steady stream of new insights, technologies and inventions that enable us to improve the reliability of our products and systems, ensuring the securest products and making our systems even more simple and convenient to operate.

Advances in digital technologies are creating a whole new world of possibilities. Siemens is at the leading edge of progress in this field and continues to redefine both current and future technologies.

■ Reliability

With a history of over a hundred years, if you need an established, reliable partner you are in the very best of hands with Siemens. System expansions and upgrades can be continuously made over a period of years, which ensures your investment for the future.

■ Security

Siemens products and systems provide you with security. Today, tomorrow and for decades to come. That's why countless customers around the world place their trust in Siemens.



